

## Johnson Family Orthodontics - Salem, OR



### ORTHODONTIC OFFICE + ADDITIONAL TENANT BUSINESS SPACE

A Salem orthodontist took on the task of straightening out an industrial yard, in order to create an oasis of clean lines in a gritty area.

This 12,900 Sq. Ft., two-story commercial building features a full orthodontic office on the top floor, with spaces for tenant businesses on the ground floor. The building sits on a 2.6 acre property—previously a storage space for industrial equipment and vehicles—that Lenity helped the client turn into a quirky and vibrant community hub. Lenity was able to create bright and welcoming new space in this building, featuring a locally-sourced mass-plywood flooring system. A combination of screen walls (with planned murals from local artists) and fast-growing evergreens screen what remains of the area's neighboring original industrial features.

This project was nominated for the *Daily Journal of Commerce's* 2023 Top Project awards and was ultimately awarded second place in the Healthcare category – a great achievement for both Lenity and our client!

**AWARD-WINNING DESIGN - SEE MORE:**

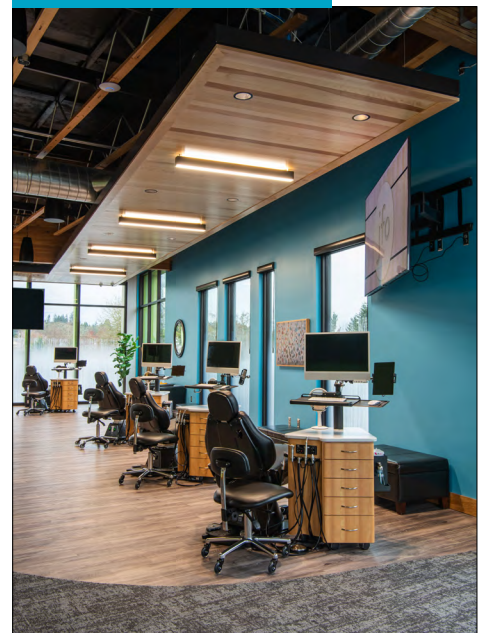
### Lobby Waiting Area



### Interior Hallways



### Work Stations



Find out what we can do for you! Call or click for more information.

**p** 503 399 1090 **f** 503 399 0565 **w** lenityarchitecture.com



# ON THE BOARDS

Here is an upcoming, unique blend of senior housing and mixed use project near Orcutt, California.



## ORCUTT COMMONS

**City, State:** Orcutt, CA

**Project Type:** Senior Housing + Mixed Use

**Project Specs:** A new senior-care campus, constructed over multiple phases. The complete campus will include assisted living and memory care facilities, a number of senior duplexes, fourplexes, and independent living facilities, a care center, a daycare center, and workforce housing.

### ARCHITECTURAL SERVICES PROVIDED:

- Pre-Design
- Master Planning
- Entitlements
- Schematic Design

[SEE MORE:](#)

# FINISHED PROJECT

Take a look at one of our completed assisted living + memory care senior housing projects in Santa Rosa, California.



## THE LODGE AT PINER ROAD

**City, State:** Santa Rosa, CA

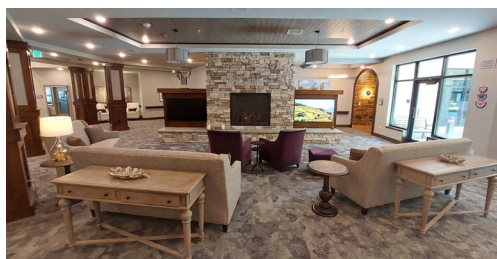
**Project Type:** AL/MC Senior Housing

**Project Specs:** The Lodge at Piner Road, a two-story, 77,000+ sq.-ft., assisted living and memory care senior living community, offers a safe, welcoming, and active retirement living to seniors. Located on two acres, the exterior and interior details draw inspiration from the surrounding area by both famous residents and locale. Construction was completed in December 2022.



### ARCHITECTURAL SERVICES PROVIDED:

- Architectural Planning
- Land Use Approval
- Site Planning
- Permitting
- MEP Engineering
- Landscape Architecture
- Construction Admin.



[LEARN MORE:](#)

# CELEBRATING ONE-YEAR ANNIVERSARIES

## MEET CHRISTOPHER - CAD SPECIALIST

Chris Youngberg joined Lenity in March 2022 as one of our CAD Specialists. With a background in mechanical design, he has enjoyed being an asset for both of Lenity's architectural and engineering departments' production teams, conducting drafting, modeling, and designing structures and features. His expertise helps to identify possible conflicts between these departments before they arise.

Driven by curiosity and a passion for learning, Chris looks forward to learning more about architecture as it overlaps two of his favorite things – math and art. When asked what he loves most about working at Lenity, he responded, "Just about everything. From the employer-provided coffee to the leadership skills observed in others that drives Lenity's success, there is a lot here to not take for granted." His future career goals include gathering as much knowledge as possible to gain the ability to work independently, and eventually, to teach and lead others.



Chris Youngberg

### WHAT MAKES CHRIS TICK:

- **Personal Motivation:** Time will pass whether we want it to or not; may as well fill that time doing something productive!
- **Most Grateful for:** Those who have helped him get to where he is today. Success is rarely achieved by one's own efforts, and he will always be grateful for those of whom took the liberty to assist in his endeavors.
- **Most Passionate About:** The Oxford comma. Much like Pluto, it belongs.



Amanda Johnson

## MEET OUR CAD SPECIALIST - AMANDA

Amanda Johnson joined Lenity in March 2022 as one of our CAD Specialists. Utilizing her background in civil engineering, she's responsible for drafting of projects at all stages in AutoCAD and Revit – from schematic design to revisions and updates. Amanda looks forward to learning more about rendering as she loves seeing projects in 3D or realistic imagery. It helps bring the project to life. One of her future career goals includes gaining an expansive knowledge of all project types by being a part of as many different types of projects that Lenity works on – commercial, senior housing, hospitality, residential, just to name a few.

### FUN FACTS:

- **Personal Motivation:** Passion for a project. Being really interested in what I am working on always gives me that extra boost in motivation.
- **Jane of All Trades vs. Master of One:** Would rather be a Jane of many trades, as you never know when something could come in handy.

## LENITY BIRTHDAYS

Happy Birthday to all the fall babies out there!

**SEPTEMBER:**      **OCTOBER:**      **NOVEMBER:**

Nate & Joshua

Ian

Amanda &  
Brian L.



lenity  
architecture, inc.

Find out what we can do for you!  
Call or click for more information.

503 399 1090

lenityarchitecture.com

3150 Kettle Court SE  
Salem, OR 97301

[Update subscription preferences](#) or [Unsubscribe](#)