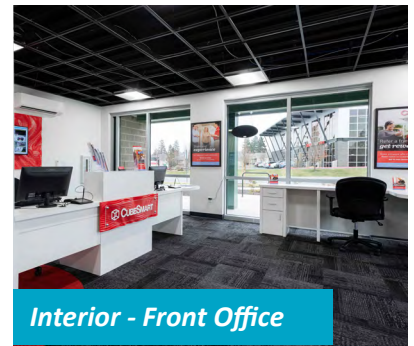


CubeSmart - Bend, OR



Interior - Storage



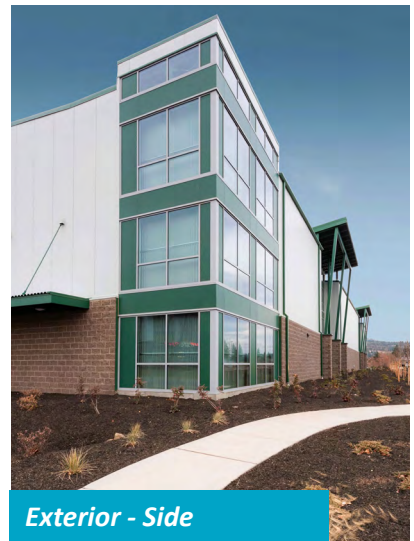
Interior - Front Office

COMMERCIAL NEW CONSTRUCTION PROJECT

CubeSmart is a three-story, over 107,000 sq.ft. self-storage project with approximately 800 units. Located on nearly two acres, CubeSmart is not your expected box storage project.

Working closely with the City, Lenity Architecture took great care to preserve the Central Oregon aesthetic that makes Bend so unique, by choosing specific architectural details and colors that spoke to the area. A blend of crisp, bold colors and metal finishes, coupled with carefully selected exterior architectural details, makes a strong design statement.

CubeSmart is a great option for the Bend area, offering customers a variety of storage unit sizes and contemporary security features.



Exterior - Side

ARCHITECTURAL SERVICES PROVIDED FOR THIS PROJECT:

- Site Planning
- MEP Engineering
- Landscape Architecture
- Land Use Approval
- Permitting
- Construction Admin.

[Click here for more info:](#)

Find out what we can do for you! Call or visit for more information.

[p 503 399 1090](tel:5033991090) [f 503 399 0565](tel:5033990565) [w lenityarchitecture.com](http://lenityarchitecture.com)

ON THE BOARDS

Here is a new project we have on the boards located in the San Francisco Bay Area. Great care was taken to ensure an active lifestyle by taking advantage of views and maximizing livability with walking paths around the property.



THE LODGE AT GLEN COVE

City, State: Vallejo, CA

Project Type: Senior Housing AL/MC

Project Specs: Located on five acres of prime waterfront property, The Lodge at Glen Cove, a three-story, 112,000 Sq. Ft. retirement community will feature 140 assisted living and memory care units. With both an amazing location and thoughtful design, residents will truly be able to enjoy retirement.

ARCHITECTURAL SERVICES PROVIDED:

- Architectural Planning
- MEP Engineering
- Permitting
- Construction Administration

Click here for more info:

FINISHED PROJECT

Coast to coast, take a look at one of our Memory Care communities in the Southwest.



PARKLAND MEMORY CARE

City, State: Chandler, Arizona

Project Type: Memory Care

Project Specs: Located on 3.82 acres, Parkland Memory Care community is single-story, 72 bed, 36,500+ SF facility. We believe that successful projects are the result of designing a building with the needs of the residents as the main focus. Engaging residents and encouraging personal interactions, a variety of open, common areas are incorporated throughout the design. In the dining room, skylights take advantage of the plentiful Southwest sun.

Click here for more info:

ARCHITECTURAL SERVICES PROVIDED:

- Architectural Design
- MEP Engineering
- Permitting
- Construction Admin.



Marina Statsenko

MEET OUR NEWEST CAD SPECIALIST

Marina Statsenko, our newest CAD Specialist II, joined Lenity in May. As a CAD Specialist, Marina is responsible for preparing quality, accurate drawings and specification documents. When asked what drew her to Lenity Architecture, she said, "I saw a potential to continue learning, growing and expanding my knowledge in CAD/BIM, by being involved in various residential/commercial buildings."

One who is motivated to succeed by taking on new challenges, Marina likes to expand her knowledge and enjoys the constant opportunity to improve – both at work and at home. "I love to travel and see different architecture, play and teach violin and piano, read books, draw, paint, ski, and spend quality time with friends and family," Marina mused. On her downtime, you can catch Marina involved in church activities, teaching private music lessons to kids, going on missionary trips and using her musical skills and making a difference in other's lives. With her creative, detail-oriented and caring spirit, she is a welcomed addition to the Lenity family!

Click to learn more about Marina:

LENITY'S SECOND ANNUAL CHILI COOK-OFF!

Lenity's Fun Committee hosted the Second Annual Chili Cook-Off. The entries pushed the creative envelope of chili. While all entries were undeniably delicious, a few of the entries reigned supreme. The top three finishers could choose their own prizes - colorful utensil bouquet, kitchen knife set or crystal serving set.

- Zach Morse's *Lenity's Gimp Legged Deer Sausage Chili* was the grand winner. Inspired by the elusive three-legged deer near our office, Zach's chili featured handmade deer sausage.
- Audray Thomas' *Audray's Atomic Chili* was self-described as dangerously delicious. It didn't disappoint.
- In a tightly contested bout between third, fourth and fifth place, Melanie Ryan's *Not Your Dad's Green Bean* chili placed Third.
- Pamela Triplett's *Casper's Chili* featured chicken and beans in a creamy chili.
- Matt Davis's wife Caryn concocted a delightful vegan version of a classic chili.
- Sam Thomas offered a traditional "Skyline" *Cincinnati Chili*.
- Nathan Jones' pork chili was lovingly referred to as *BMOFHCCFGBSLSS11HSFLSTRDBC* for short.
- Adam Ward's entry, simply named *Chili* measured the hottest of all entries on the Scoville scale.

The Spread



Wishing very warm birthday wishes to our winter babies!

LENITY BIRTHDAYS

December:	January:	February:
Daniel W.	Dan P.	Marcus, Michael B.,
Andy, Kris M.		Kristin, Zach, Max,
Ron		Aaron, Dan R., Matthew,
		David H.



lenity
architecture, inc.

Call or click to find out what we can do for you!

o 503 399 1090 w lenityarchitecture.com
a 3150 Kettle Court SE, Salem, OR 97301

[Update subscription preferences](#) or [Unsubscribe](#)